



INTERNATIONAL GLIDING COMPETITION

PRIBINACUP2014

APRIL 19–26, 2014 NITRA, SLOVAKIA

Self Briefing

General



- Welcome to the self briefing for the 14th edition of Pribina Cup – International Easter Gliding Competition
- This document is an attachement of Local procedures of Pribina Cup 2014

Contents



1. Airport characteristics
2. Airport access
3. Airport organization
4. Grid & takeoff procedures
5. Finishig & landing procedures
6. Flight documentation delivering

Airport Nitra



- Airport Nitra (**LZNI**) has a GPS co-ordinates:
N481647
E0180802,
ELEV 135 m (443 ft)
- A local information radio frequency: **123.4 MHz („Nitra traffic“)**
- **Operational Runways:**
 - 33 RIGHT / 15 LEFT 1080 m X 50 m grass
 - 33 LEFT / 15 RIGHT 1080 m X 100 m grass
- SWY 1200 m X 200 m

Website: airportnitra.sk

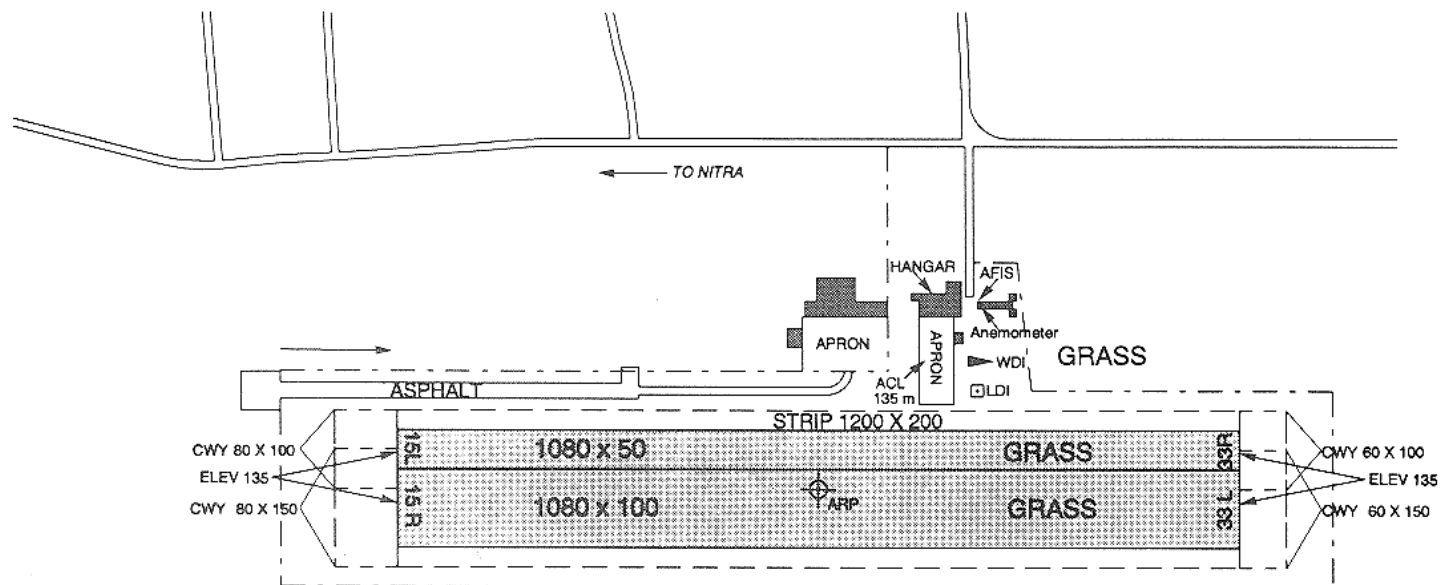
AERODROME CHART - ICAO

48°16'47" N
018°08'02" E

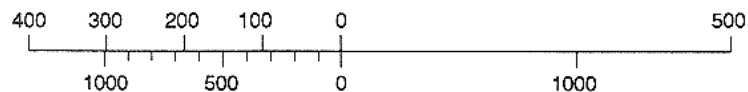
ELEV 135 m

NITRA

VAR 2°E 1996
ANNUAL RATE
OF CHANGE 4"E



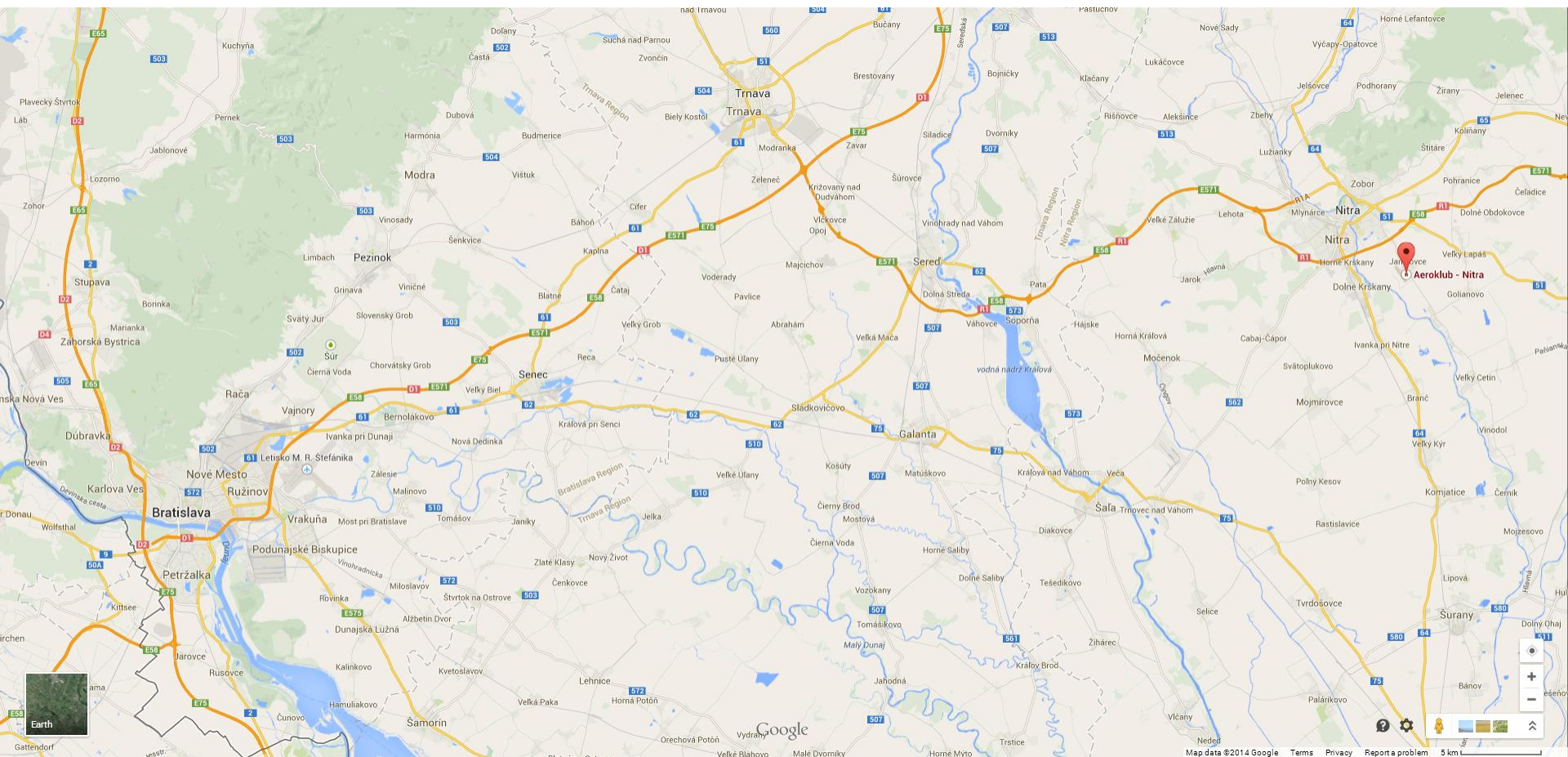
SCALE 1:10 000
METRES



FEET

RWY	TRUE BEARING	THR	BEARING STRENGTH
33 R	325°	48°16'57" N 018°08'19" E	5700 kg / 0,7 MPa
33 L	325°	48°16'50" N 018°08'19" E	
15 R	145°	48°16'59" N 018°07'42" E	
15 L	145°	48°16'52" N 018°07'42" E	

The PR1BINA highway



Airport organization



Response	Percentage
Yes	75%
No	25%



4. Apron
5. Hangar & Briefing hall
6. Camping area
7. Info office & Scoring office
8. Bar
9. Dinning room
10. Water ballast
11. Bungalows
12. Aero Slovakia complex
13. AeroPro

Grid runway 33



- 1. NE grid (15m, 20m, Open)
- 2. SW grid (Club)
- 3. re-landing



1

3

33

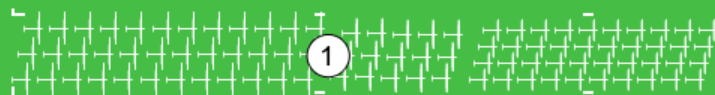
2



Grid runway 15



1. NE grid (15m, 20m, Open)
2. SW grid (Club)
3. re-landing



15

3



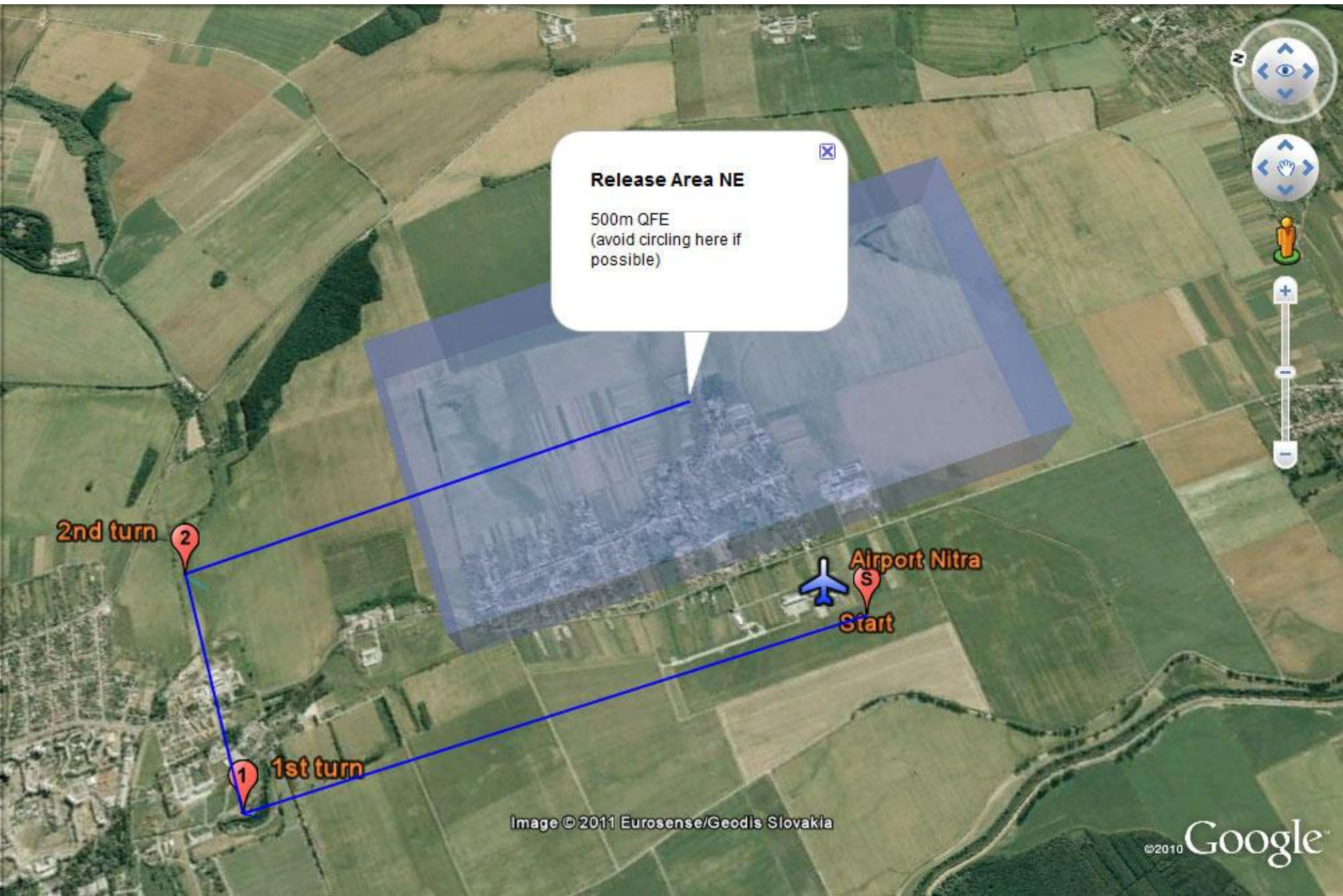


Takeoff runway for 15m, 20m & Open class
Landing runway for Tow planes (gliders)
Takeoff runway for Club class

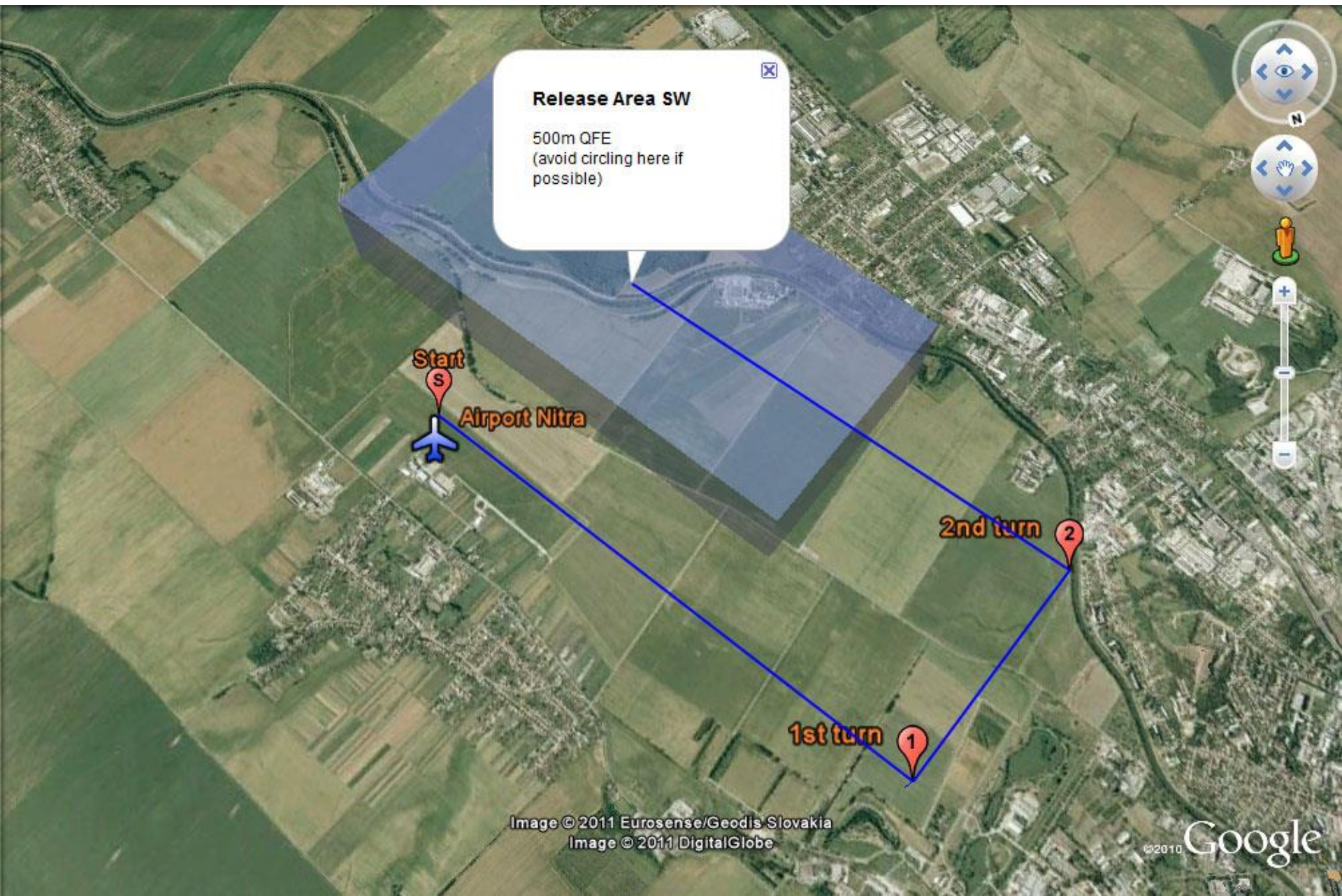
15L

15R

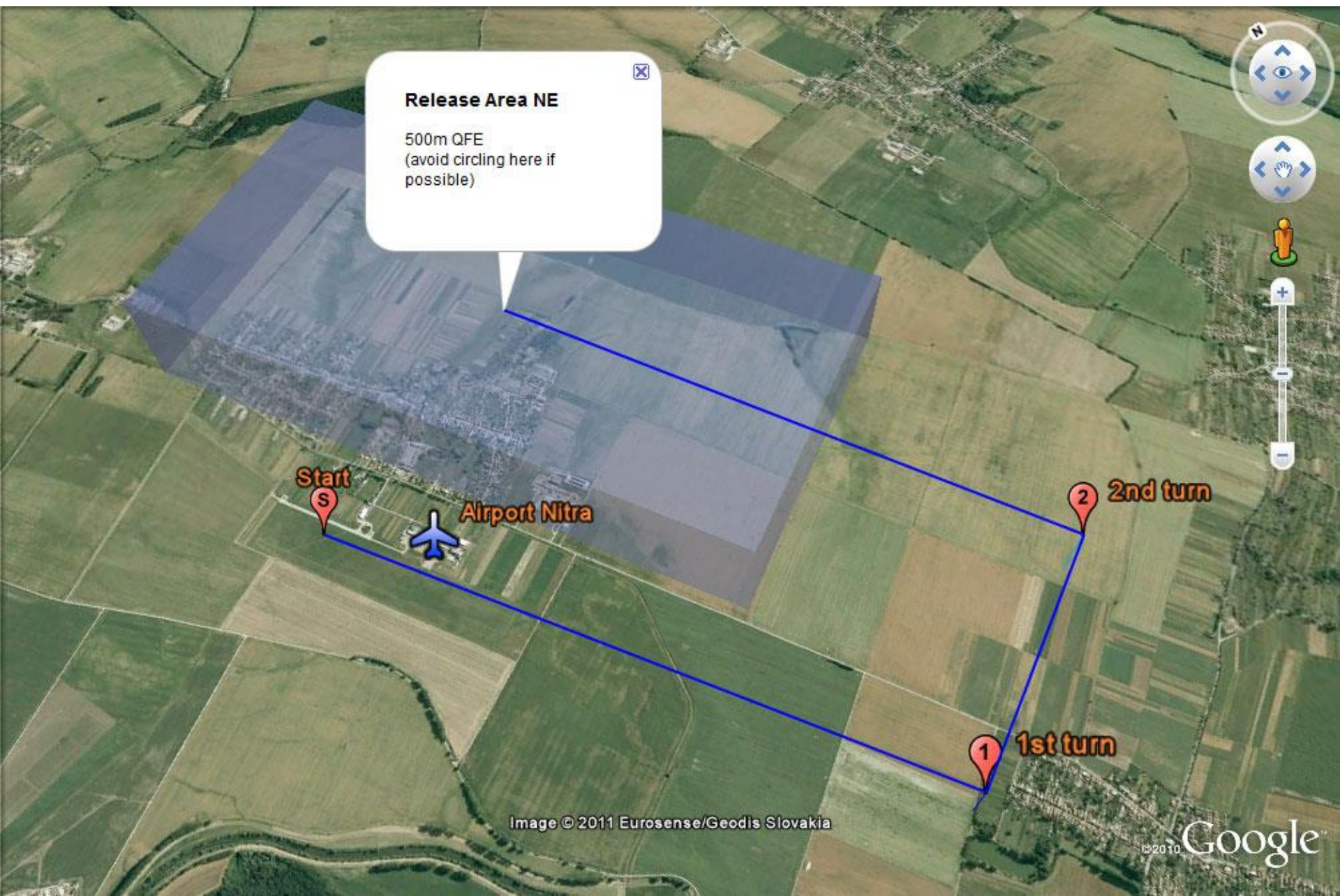
Takeoff from runway 33: 15m, 20m Multi-Seat & Open class



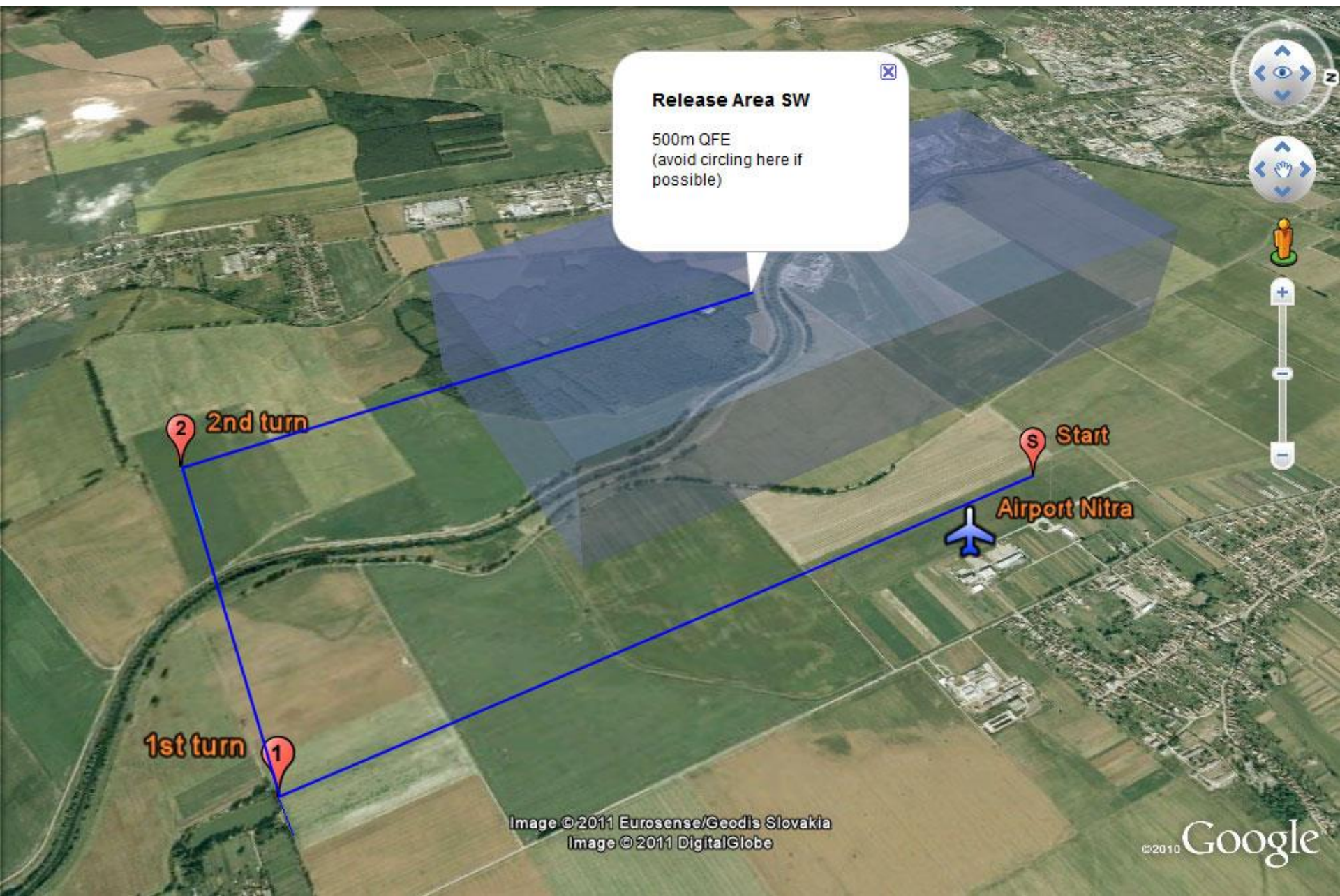
Takeoff from runway 33: Club class



Takeoff from runway 15: 15m, 20m Multi-Seat & Open class



Takeoff from runway 15: Club class



Finishing procedures



- Announcing of the arrivals will be done on the airport frequency 123.400 MHz. For announcing the arrivals the following phrases shall be used at the place specified at briefing:
 - [Competition number], [distance to finish line in km] - As soon as possible at 10km final or last control point of the task used for aligning the sailplanes in the same direction for the final.
- More information about finishing procedures in Local procedures

Arrivals 33



For landing after circuit use the left part of runway primarily!
(if not instructed otherwise by the tower)

Direct landing

Joining the circuit

Arrivals 15



**For landing after circuit use the right part
of runway primarily!**
(if not instructed otherwise by the tower)

Direct landing

Joining the circuit

Delivering IGC files



- ❑ It is required to download IGC files **by the competitors**
- ❑ There are three options how to deliver the file:
 - ❑ Attach it to an e-mail and send to igc.pribinacup@gmail.com (recommended)
 - ❑ Upload via form on the website
 - ❑ Or deliver it stored on (micro/mini/standard) SD card to the Info office
- ❑ **All Flight logs submitted must include Pilot ID and Contest Number in the IGC file**

Outlanding reporting



- Pribina Cup 2014 is using an online outlanding office (see lowcrop.aero), where you can see the current positions of outlanded competitors
- Therefore it is desired from organizer's side to get GPS position when pilot reports an outlanding if it is possible

www.pribinacup.sk



We are looking forward to see you in Nitra.