



INTERNATIONAL GLIDING COMPETITION
PRIBINACUP2015
APRIL 3–11, 2015 NITRA, SLOVAKIA

Self Briefing

www.pribinacup.sk

General



- Welcome to the self briefing for the 15th edition of Pribina Cup – International Easter Gliding Competition
- This document is an attachement of Local procedures of Pribina Cup 2015

Contents



1. Airport characteristics
2. Airport access
3. Airport organization
4. Grid & takeoff procedures
5. Finishig & landing procedures
6. Flight documentation delivering

Airport Nitra



- Airport Nitra (**LZNI**) has a GPS co-ordinates:
N481647
E0180802,
ELEV 135 m (443 ft)
- A local information radio frequency: **123.4 MHz („Nitra traffic“)**
- **Operational Runways:**
 - 33 RIGHT / 15 LEFT 1080 m X 50 m grass
 - 33 LEFT / 15 RIGHT 1080 m X 100 m grass
- SWY 1200 m X 200 m

Website: airportnitra.sk

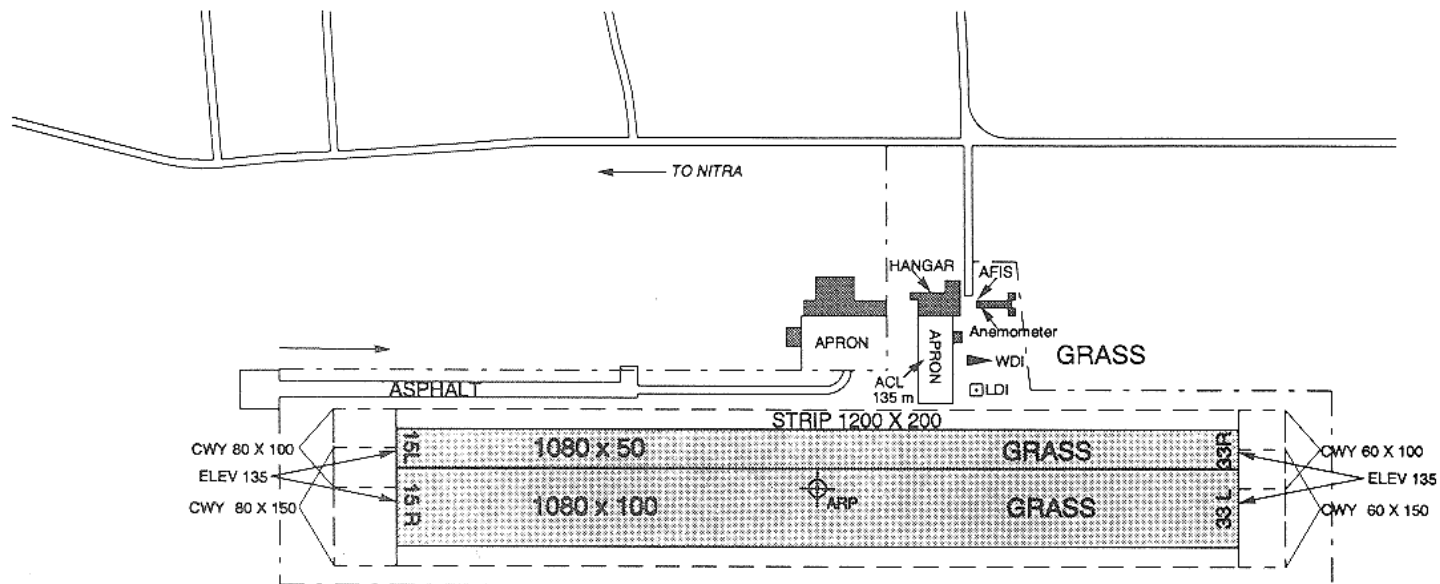
AERODROME CHART - ICAO

48°16'47" N
018°08'02" E

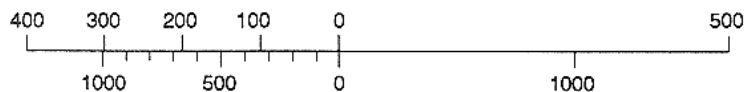
ELEV 135 m

NITRA

VAR 2°E 1996
ANNUAL RATE
OF CHANGE 4"E



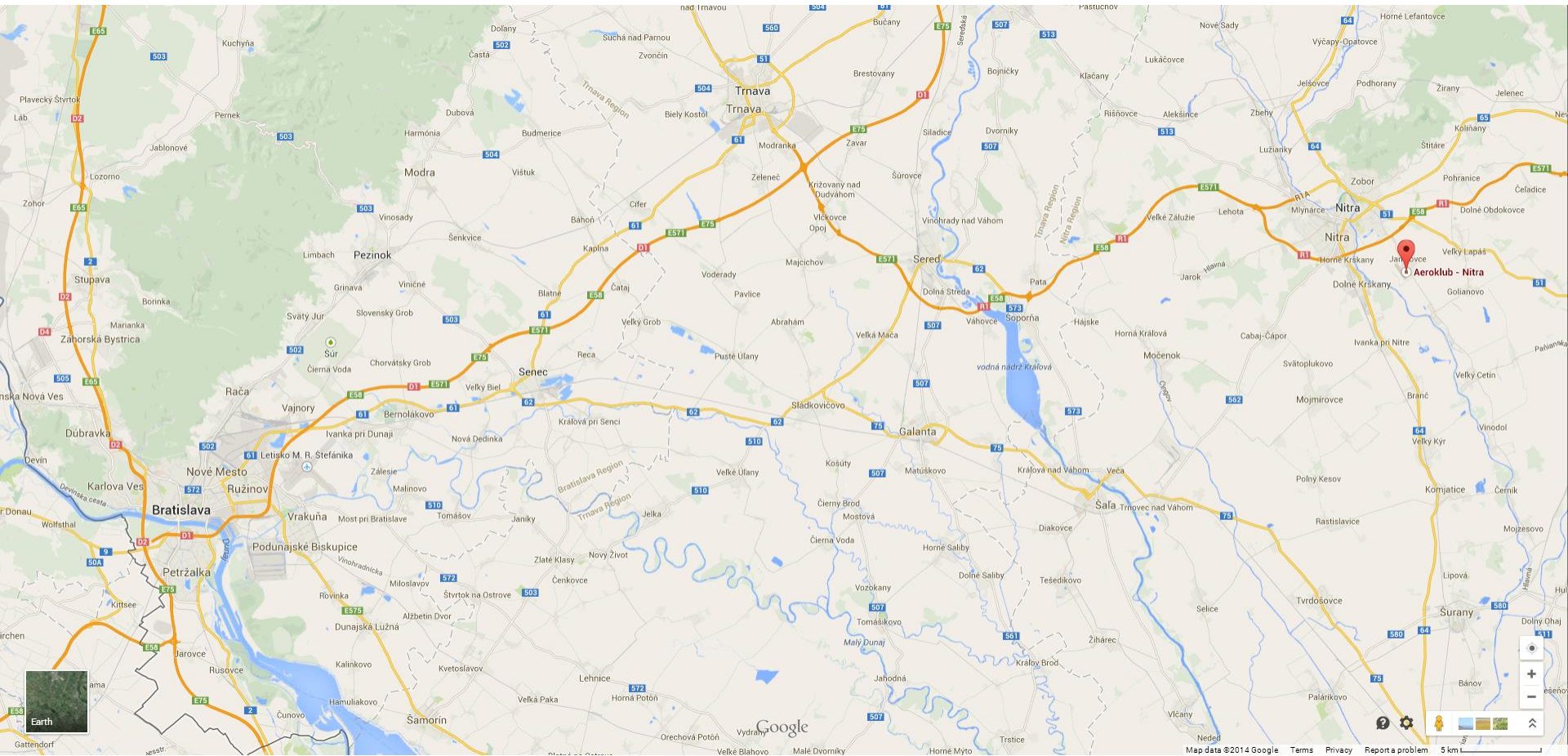
SCALE 1:10 000
METRES



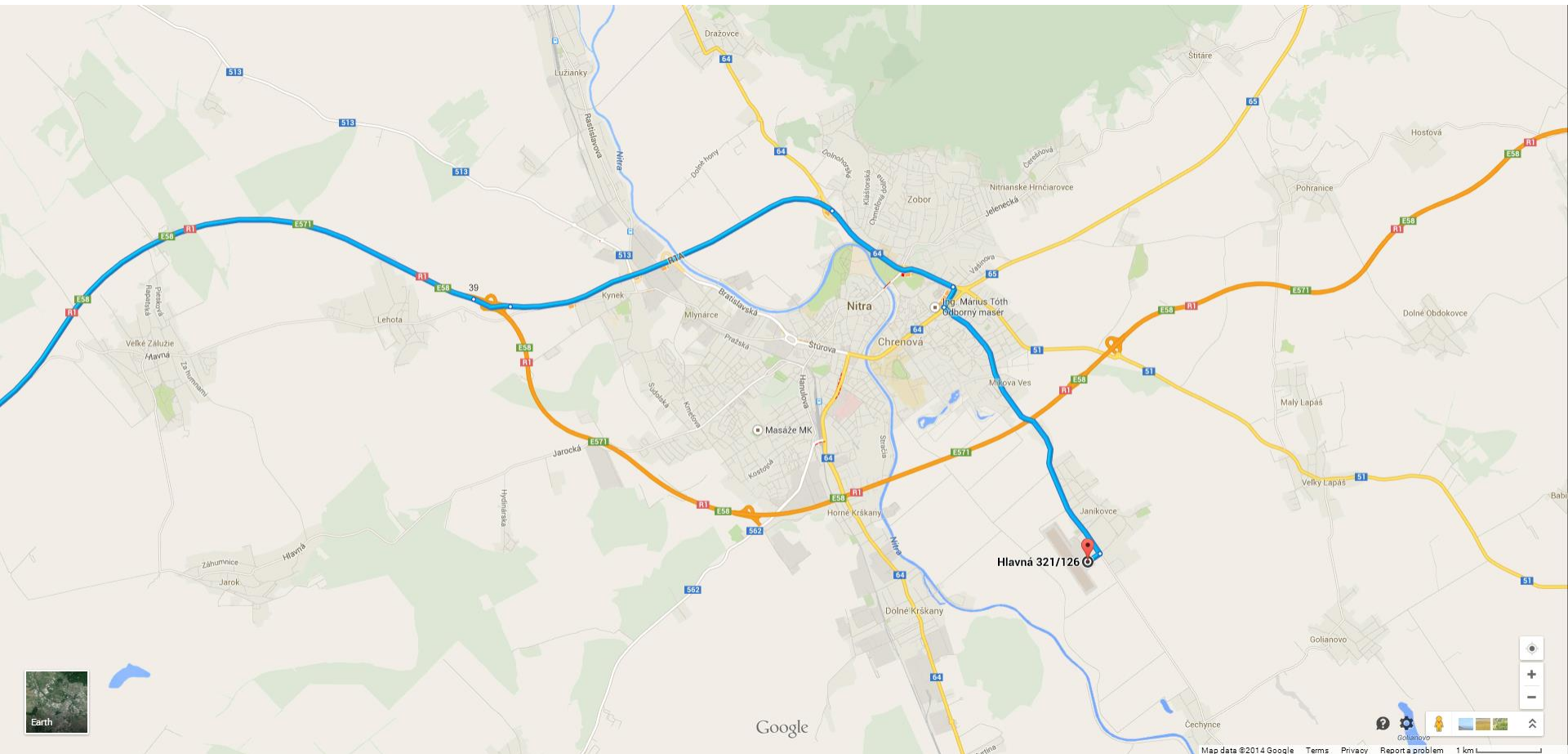
FEET

RWY	TRUE BEARING	THR	BEARING STRENGTH
33 R	325°	48°16'57" N 018°08'19" E	5700 kg / 0,7 MPa
33 L	325°	48°16'50" N 018°08'19" E	
15 R	145°	48°16'59" N 018°07'42" E	
15 L	145°	48°16'52" N 018°07'42" E	

The PR1BINA highway



Access to airport from the west (Bratislava)



Airport organization



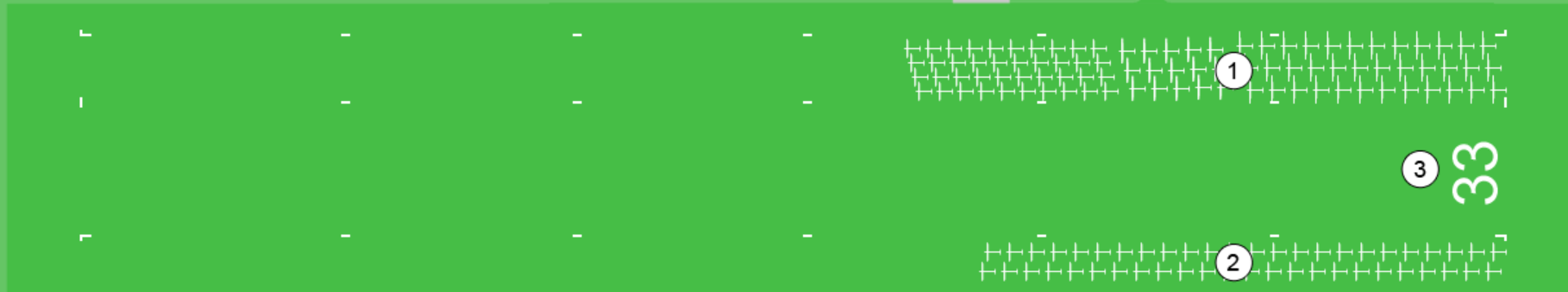
Airport organization



Grid runway 33



- 1. NE grid (15m, 20m, Open)
- 2. SW grid (Club)
- 3. re-landing





Takeoff runway for Club class

Landing runway for Tow planes (gliders)

Takeoff runway for 15m, 20m & Open class

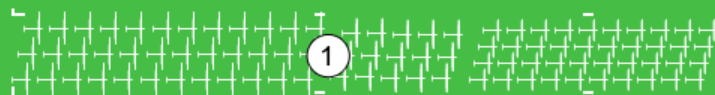
33L

33R

Grid runway 15



1. NE grid (15m, 20m, Open)
2. SW grid (Club)
3. re-landing



15

3



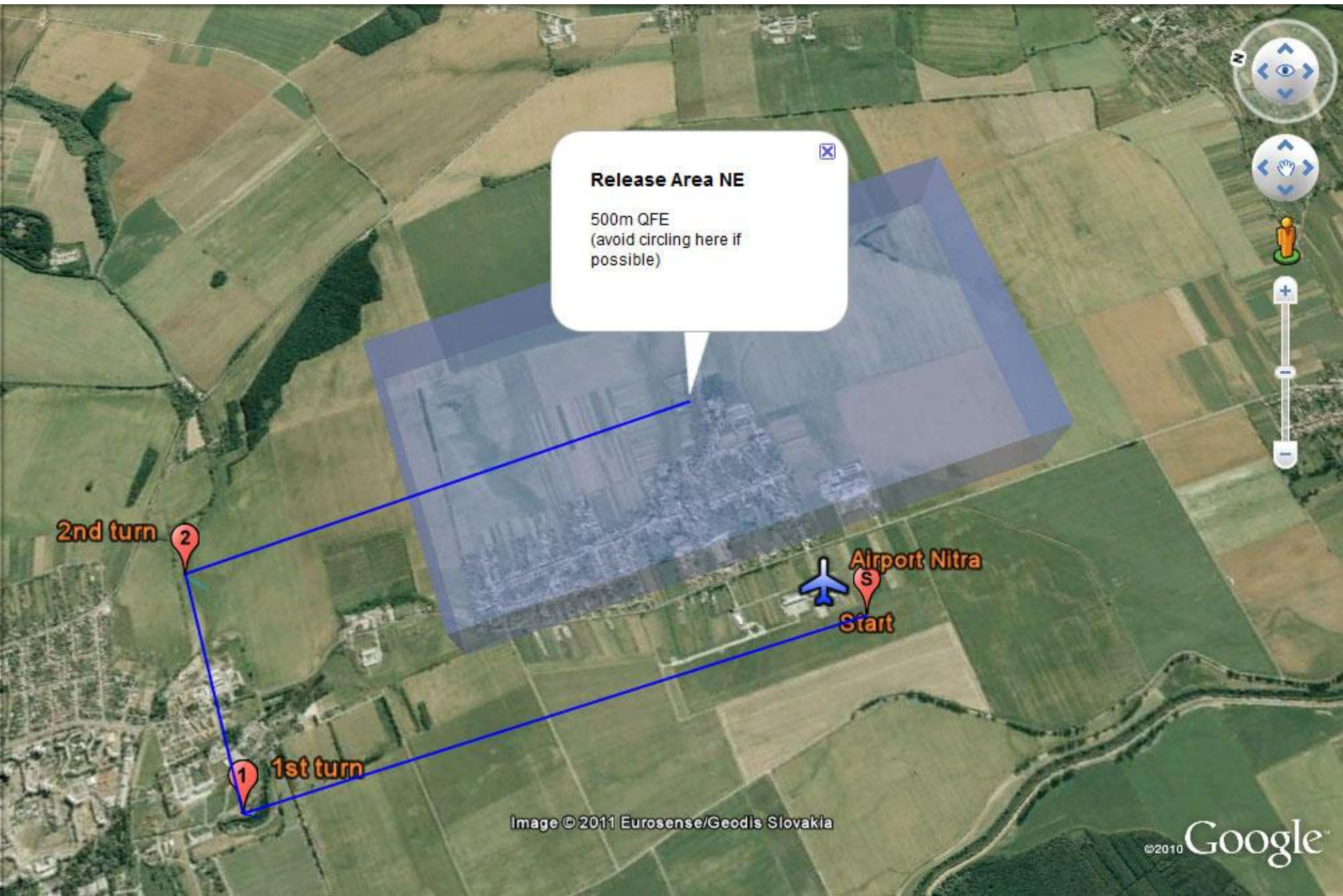


Takeoff runway for 15m, 20m & Open class
Landing runway for Tow planes (gliders)
Takeoff runway for Club class

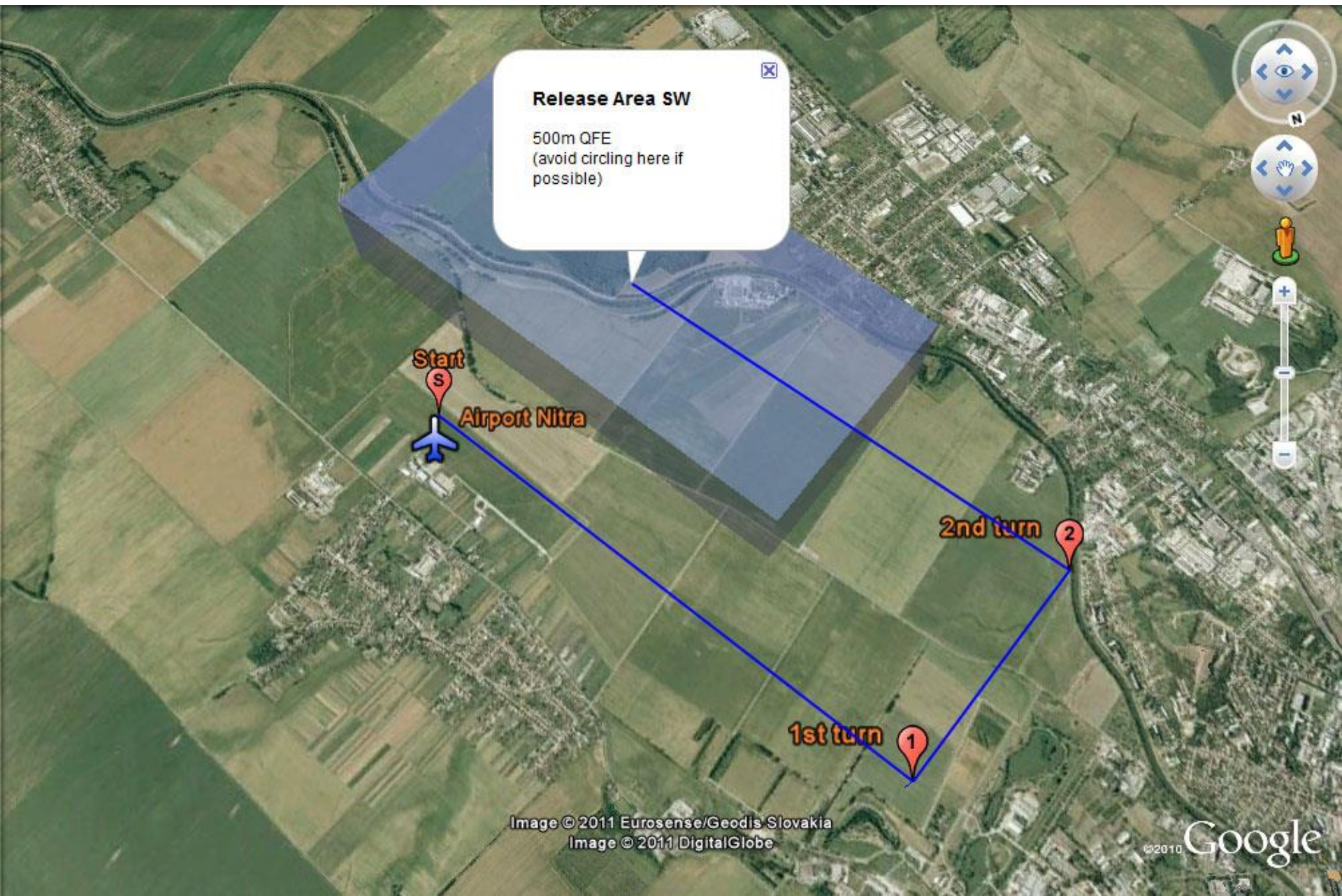
15L

15R

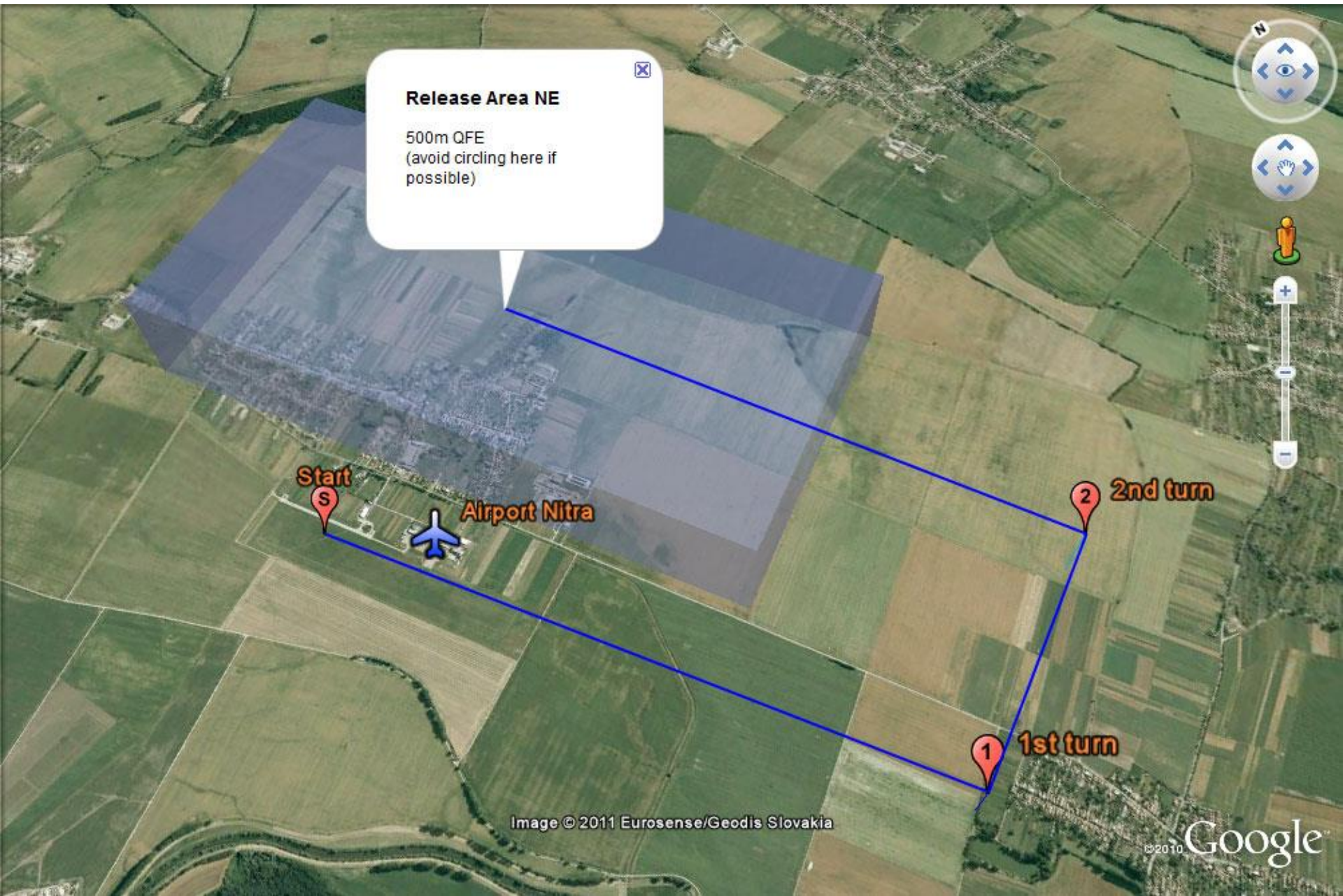
Takeoff from runway 33: 15m, 20m Multi-Seat & Open class



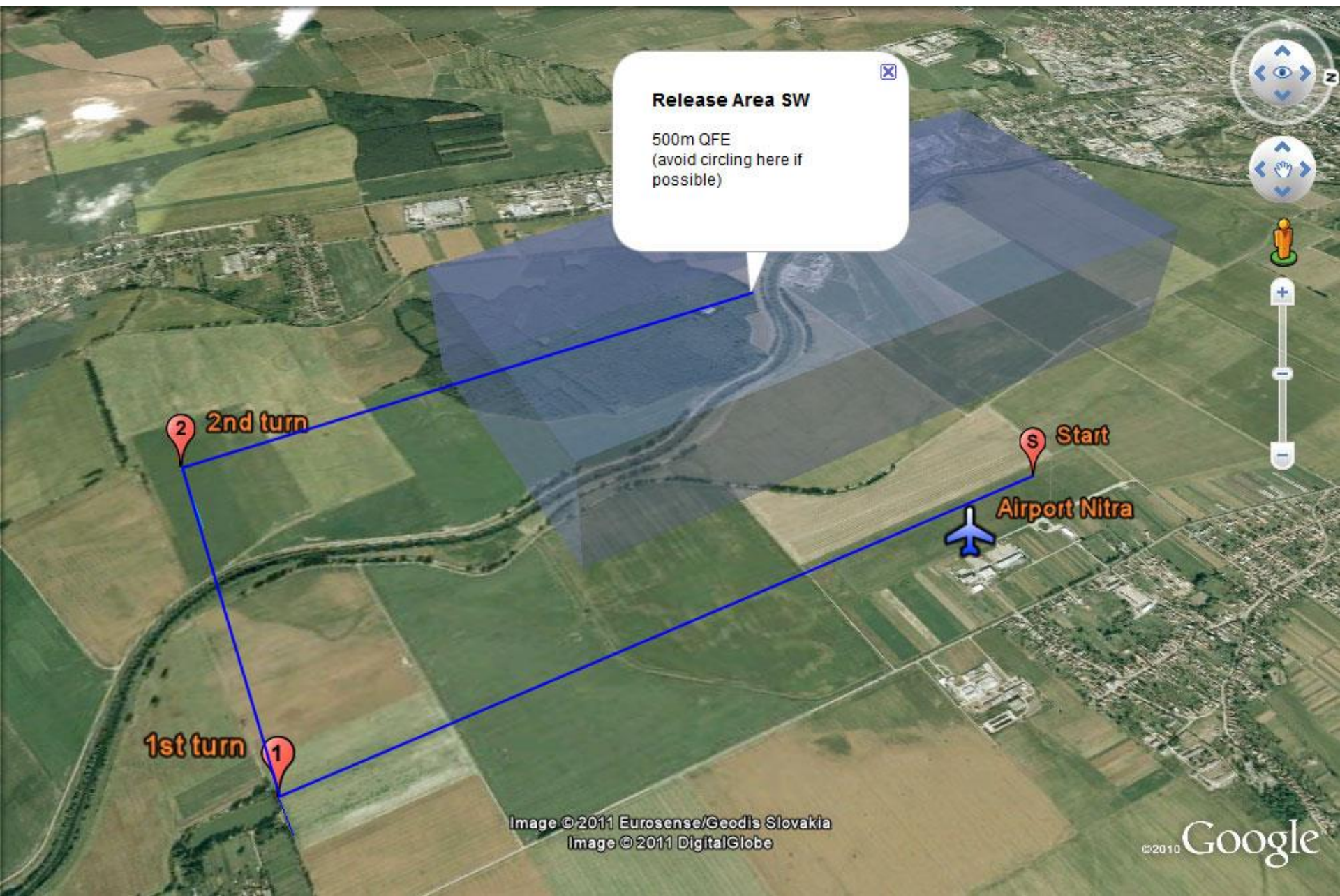
Takeoff from runway 33: Club class



Takeoff from runway 15: 15m, 20m Multi-Seat & Open class



Takeoff from runway 15: Club class



Finishing procedures

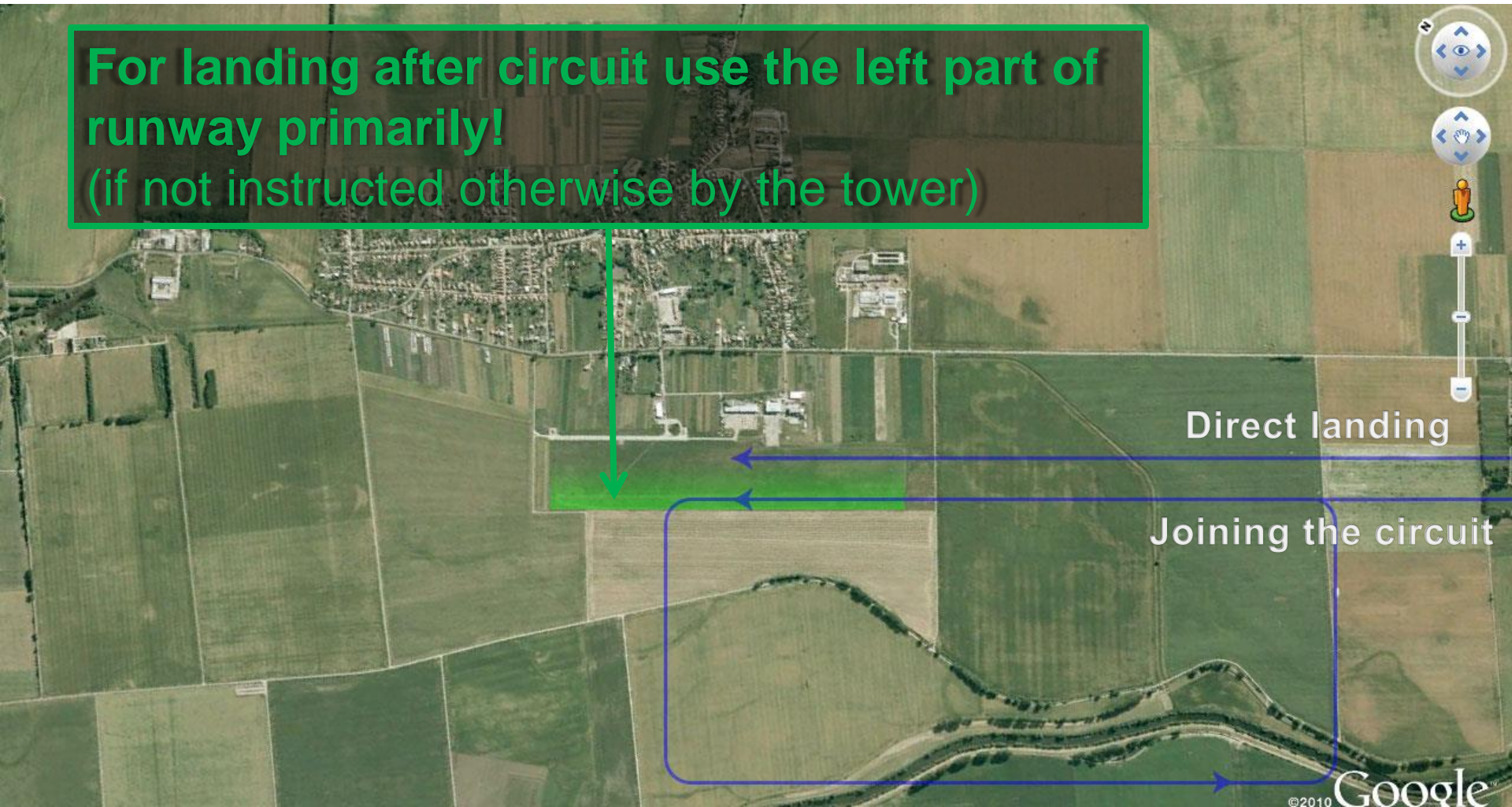


- Announcing of arrivals will be done on the airport frequency 123.400 MHz. For announcing arrivals the following phrases shall be used at the place specified at briefing:
 - ▣ [Competition number], [distance to finish line in km] - As soon as possible at 10km final or last control point of the task used for aligning the sailplanes in the same direction for the final.
- More information about finishing procedures in Local procedures

Arrivals 33



For landing after circuit use the left part of runway primarily!
(if not instructed otherwise by the tower)



Arrivals 15



**For landing after circuit use the right part
of runway primarily!**
(if not instructed otherwise by the tower)

Direct landing

Joining the circuit

Delivering IGC files



- It is required to download IGC files **by the competitors**
- There are three options how to deliver the file:
 - ▣ Attach it to an e-mail and send to igc.pribinacup@gmail.com cagala123@gmail.com (recommended)
 - ▣ Upload via form on the website
 - ▣ Or deliver it stored on (micro/mini/standard) SD card to the Info office
- **All Flight logs submitted must include Pilot ID and Contest Number in the IGC file**

www.pribinacup.sk

We are looking forward to see you in Nitra.