



# Self Briefing

# General



- Welcome to the self briefing for the 24th edition of Pribina Cup – International Easter Gliding Competition
- This document is an attachment of Local procedures of Pribina Cup 2026

# Contents



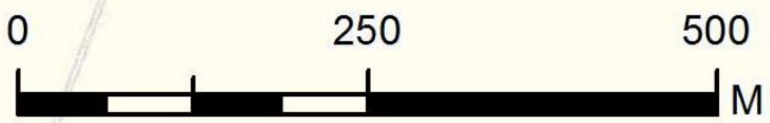
1. Airport characteristics
2. Airport organization
3. Grid
4. Takeoff procedures
5. Finishing procedures
6. Delivering flight documentation
7. Airspace

# Airport Nitra



- Airport Nitra (**LZNI**) has a GPS coordinates:  
48° 16' 45.93" N  
018° 07' 57.57" E  
ELEV 135 m (443 ft)
  
- A local information radio frequency: **123.405 MHz („Nitra traffic“)**
  
- **Operational Runways:**
  - 33 RIGHT / 15 LEFT 1080 m X 50 m grass
  - 33 LEFT / 15 RIGHT 1080 m X 100 m grass
- RWY 1200 m X 200 m

Website: [www.airportnitra.sk](http://www.airportnitra.sk)



-  building
-  boarding area
-  parachute service area
-  parachute jumping area

# Airport organization



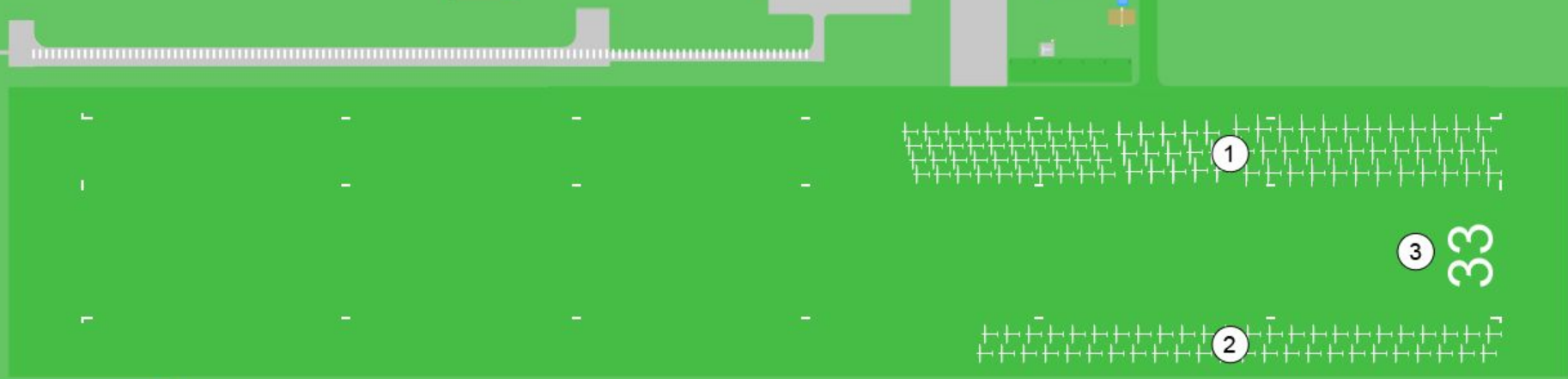
# Airport organization

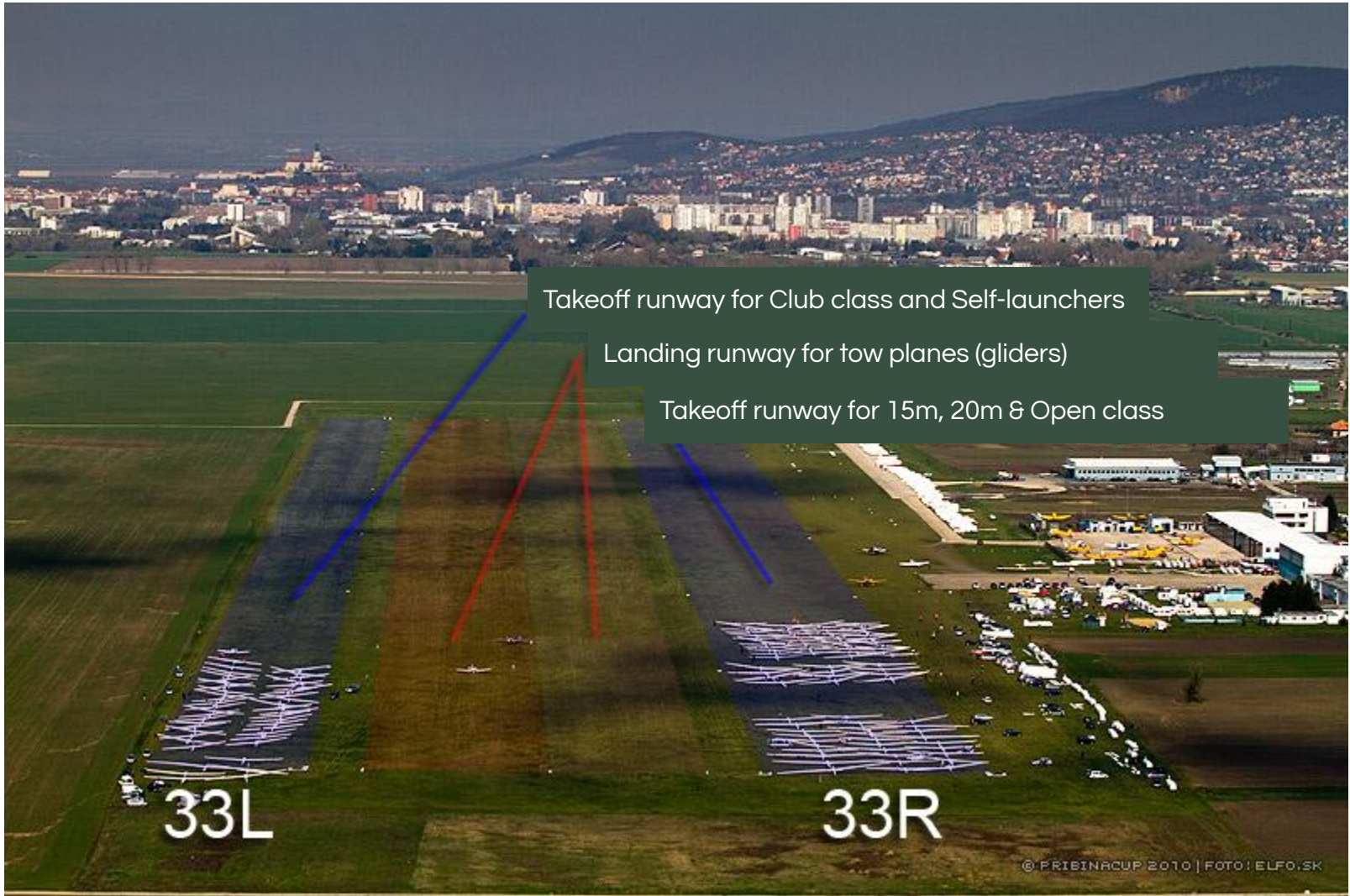


# Grid runway 33



1. NE grid (15m, 20m, Open)
2. SW grid (Club and self-launchers)
3. Re-landing





Takeoff runway for Club class and Self-launchers

Landing runway for tow planes (gliders)

Takeoff runway for 15m, 20m & Open class

33L

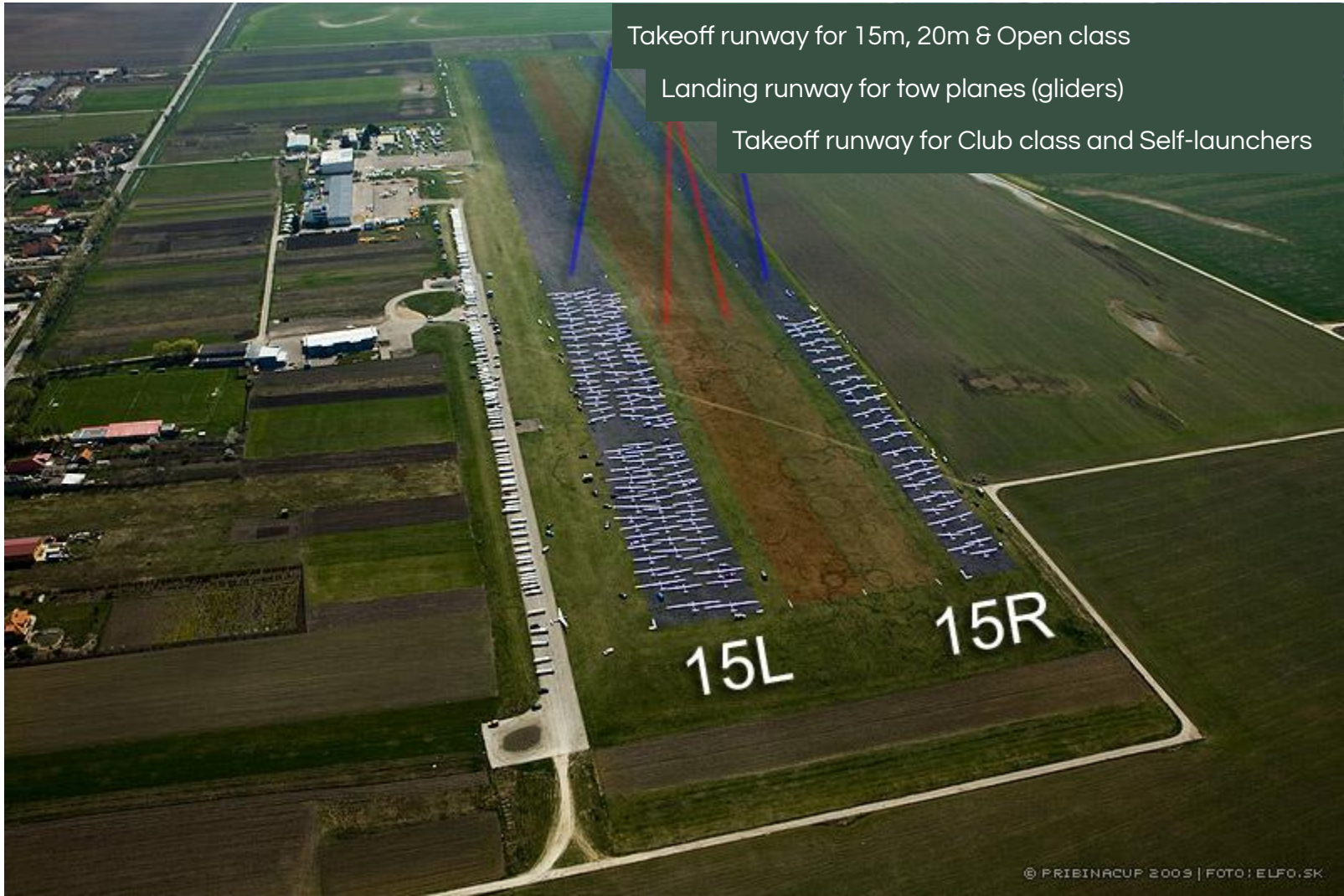
33R

# Grid runway 15



1. NE grid (15m, 20m, Open)
2. SW grid (Club and self-launchers)
3. Re-landing





Takeoff runway for 15m, 20m & Open class

Landing runway for tow planes (gliders)

Takeoff runway for Club class and Self-launchers

15L

15R

The release area is located within a 3 km radius of the aerodrome reference point.



# In-flight relaunch



Second or third in-flight relaunch by using own MoP is possible if:

- Pilot **requests relaunch** (@ downwind) on 123.405
- **Receives approval** via 123.405.
- **No or negative reply = continue normal landing** (ref. Annex A 7.3.1.c )
- **Positive reply** , follow the **same procedure as a self-launching** glider in your class.

# Finishing procedures



- Announcing of arrivals will be done on the airport frequency 123.405 MHz. For announcing arrivals the following phrases shall be used at the place specified at briefing:
  - [Competition number], [distance to the finish ring in km] - As soon as possible at 10km final or last control point of the task used for aligning the sailplanes in the same direction for the final.
- More information about finishing procedures is in the Local Procedures

# Finish ring



- 5 km radius from Nitra Aerodrome Reference Point
- Minimum height for crossing the finish is 385 m QNH

# Arrivals 33



For landing after circuit use the left part of runway primarily!  
(if not instructed otherwise by the tower)

Direct landing

Joining the circuit

# Arrivals 15



For landing after circuit use the right part of runway primarily!  
(if not instructed otherwise by the tower)

Direct landing

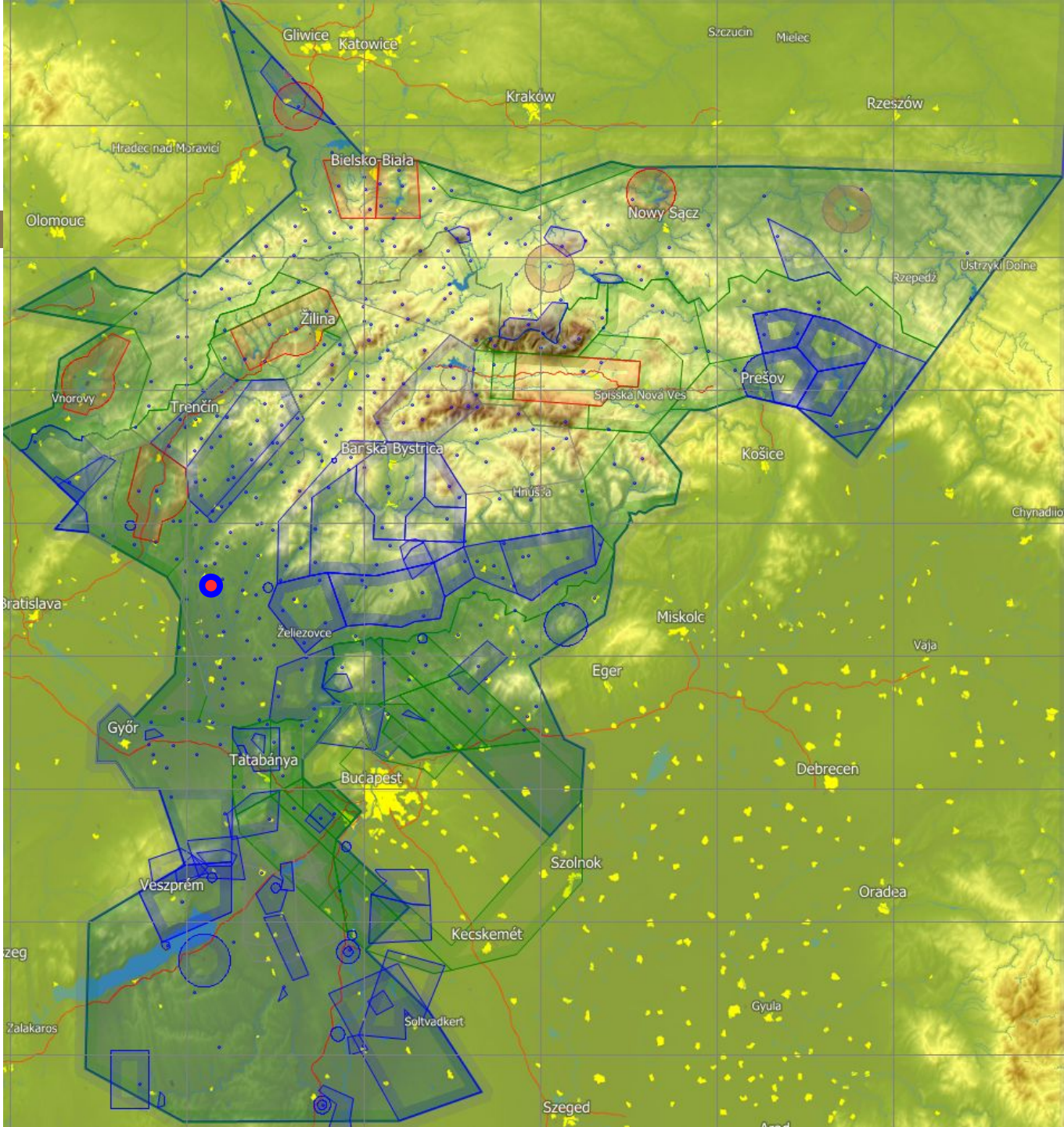
Joining the circuit

# Delivering IGC Files



- Competitors are required to download and submit their IGC files
- There are two submission options:
  - Upload the file via the official website form (recommended)
  - Alternatively, send it as an email attachment to [igc@pribinacup.sk](mailto:igc@pribinacup.sk)
- All submitted flight logs must include the Pilot ID and Contest Number within the IGC file

# Airspace



[www.pribinacup.sk](http://www.pribinacup.sk)

**We are looking forward to see you in Nitra.**